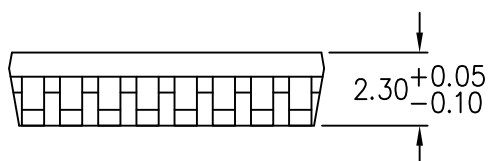
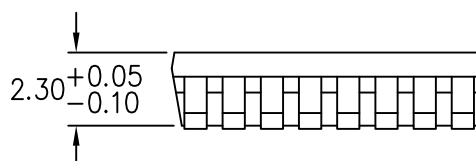


TOP VIEW



SIDE VIEW
VARIATION A



SIDE VIEW
VARIATION B



JEDEC SOLID STATE
PRODUCT OUTLINE
Copyright © 2024 JEDEC

THIS *REGISTERED OUTLINE* HAS BEEN PREPARED BY THE JEDEC JC-11 COMMITTEE AND REFLECTS A PRODUCT WITH ANTICIPATED USAGE IN THE ELECTRONICS INDUSTRY; CHANGES ARE LIKELY TO OCCUR.

TITLE PLASTIC MULTI SMALL
OUTLINE, 17 TERMINAL,
1.20 MM PITCH PACKAGE

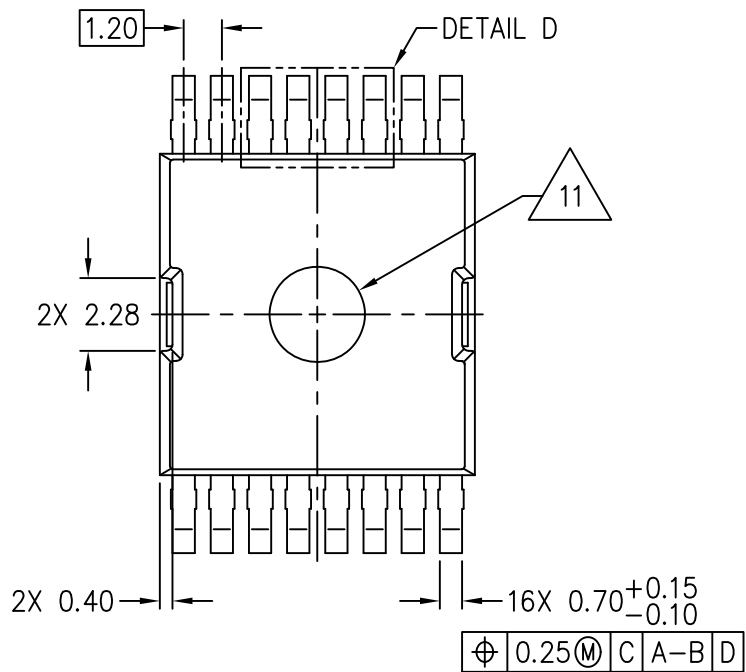
PACKAGE DESIGNATOR
PMSO-E17_l1p2...

NUMBER
MO-332

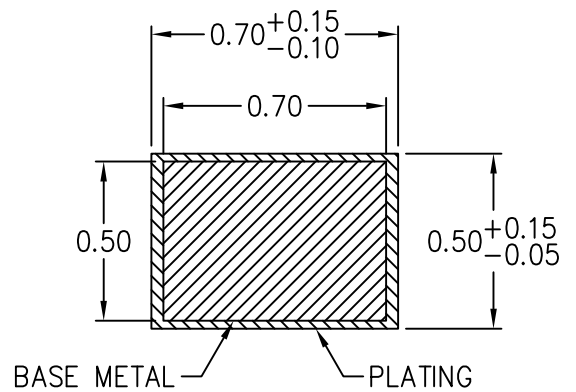
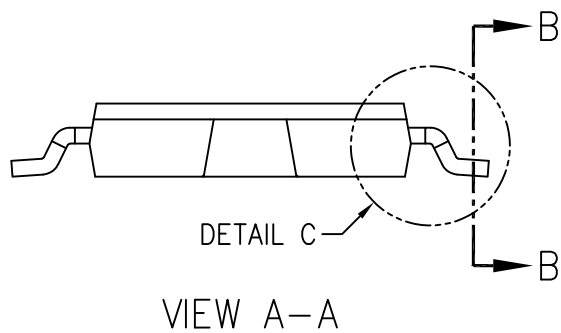
ISSUE
B

DATE
JAN 2024

SHEET
1 OF 5

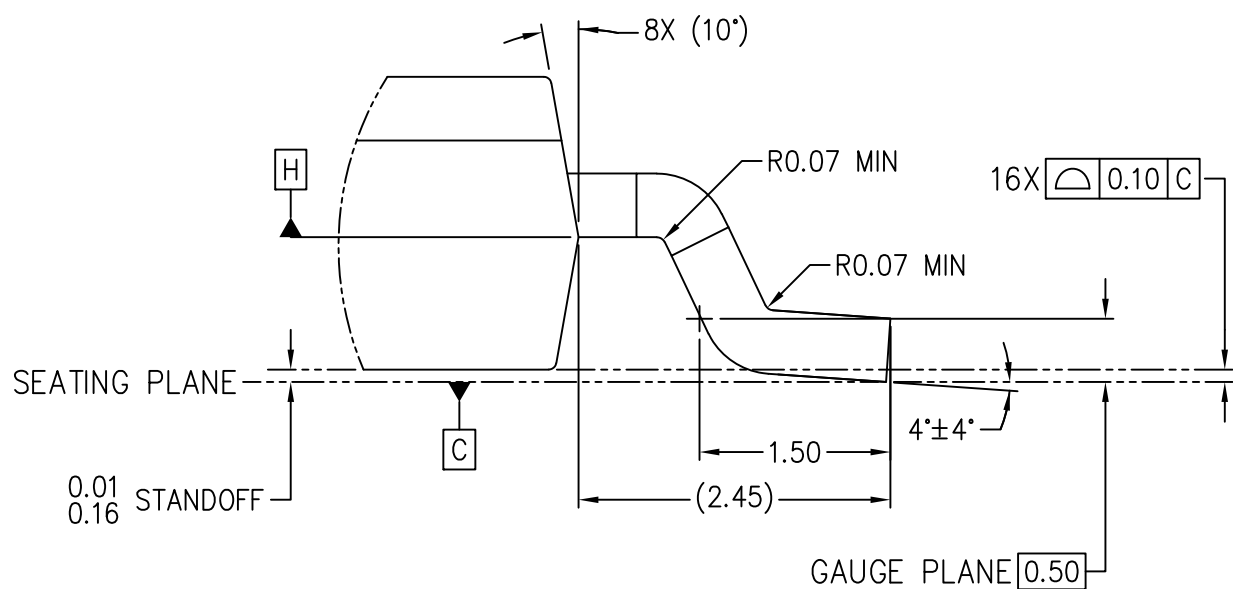
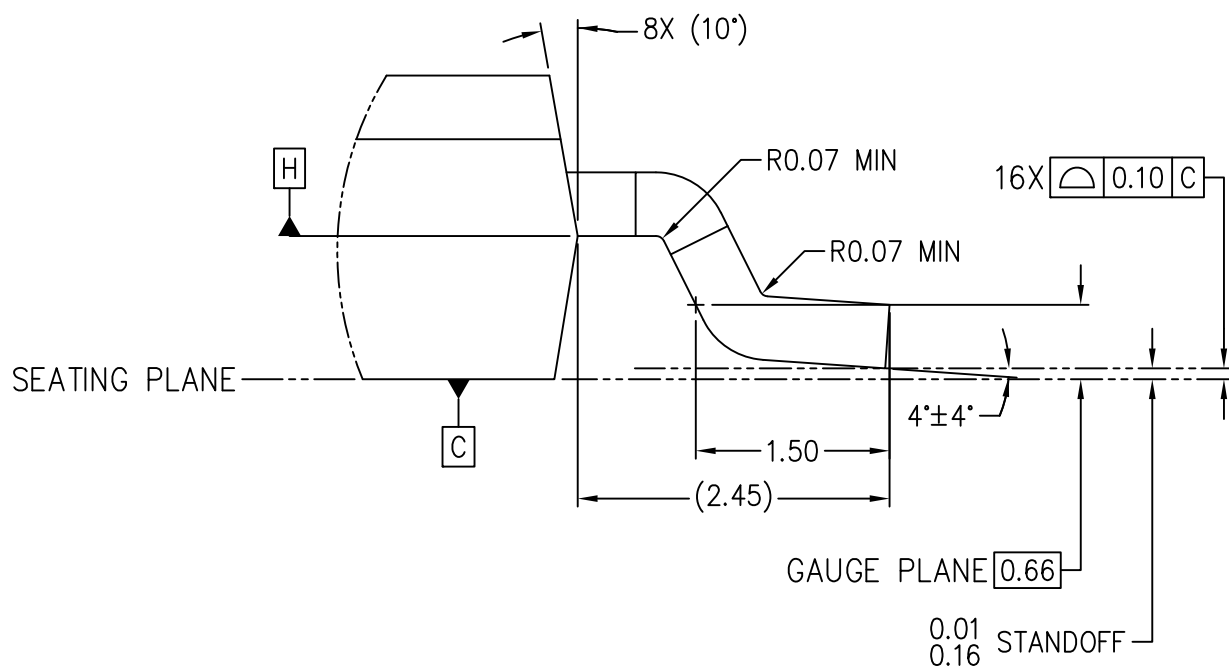


BOTTOM VIEW

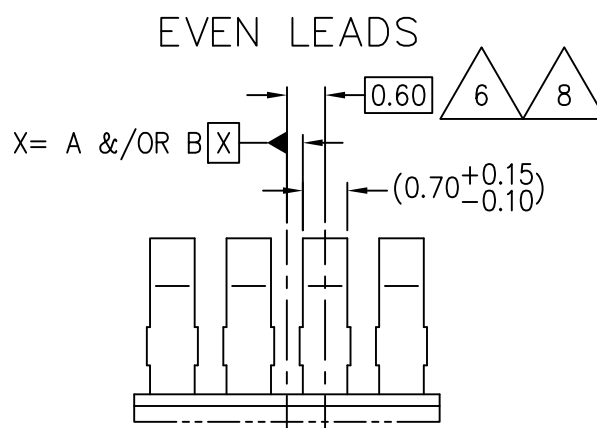


SECTION B-B





DETAIL C



DETAIL D

NOTES:

1. DIMENSIONING AND TOLERANCING PER ASME Y14.5–2009.

2. ALL DIMENSIONS ARE IN MILLIMETERS (ANGLES IN DEGREES).
DIMENSION TOLERANCING TO BE ± 0.10 UNLESS OTHERWISE NOTED.

3 DIMENSION DOES NOT INCLUDE MOLD FLASH, PROTRUSION OR GATE BURRS.
MOLD FLASH, PROTRUSION OR GATE BURR SHALL NOT EXCEED 0.15 MM PER END.
DIMENSION IS DETERMINED AT DATUM H.

4 DIMENSION "E1" DOES NOT INCLUDE INTERLEAD FLASH OR PROTRUSION.
INTERLEAD FLASH OR PROTRUSION SHALL NOT EXCEED 0.25 MM PER SIDE.
DIMENSION IS DETERMINED AT DATUM H.

5 THE PACKAGE BOTTOM MAY BE SMALLER THAN THE PACKAGE TOP, DIMENSION ARE
DETERMINED AT THE OUTERMOST EXTREMES OF THE PLASTIC BODY EXCLUSIVE OF
MOLD FLASH, TIE BAR BURRS, GATE BURRS AND INTERLEAD FLASH, BUT INCLUDING
ANY MISMATCH BETWEEN THE TOP AND BOTTOM OF THE PLASTIC BODY.

6 DATUM A & B TO BE DETERMINED AT DATUM H.

7 DIMENSIONS APPLY TO THE FLAT SECTION OF THE LEAD BETWEEN 0.10 TO
0.25 MM FROM THE LEAD TIP.

8 DIMENSION DOES NOT INCLUDE DAMBAR PROTRUSION. ALLOWABLE DAMBAR
PROTRUSION SHALL BE 0.15 MM TOTAL IN EXCESS OF THE DIMENSION
MAXIMUM MATERIAL CONDITION. THE DAMBAR MAY NOT BE LOCATED ON THE
LOWER RADIUS OF THE FOOT.

9 TERMINAL 1 IDENTIFIER MUST BE LOCATED WITHIN THE INDEX AREA INDICATED.
INDEX AREA ON THERMALLY ENHANCED TYPES IS VARIABLE DEPENDING ON DEVICE
FUNCTION (DIE PADDLE SIZE).

10 MINIMUM DIMENSIONS OF THERMALLY ENHANCED TYPES ARE VARIABLES DEPENDING
ON DEVICE FUNCTION (DIE PADDLE SIZE). MAXIMUM DIMENSIONS CAN BE EQUAL
TO MAXIMUM BODY DIMENSIONS. END USER SHOULD VERIFY ACTUAL SIZE OF
EXPOSED TERMINAL PAD FOR SPECIFIC DEVICE APPLICATION.

11 THE LOCATION AND SIZE OF EJECTOR MARKS ARE OPTIONAL.

STP (3D) FILE RECORD

3D FILE NAMES MAY EXCEED LENGTH REQUIREMENTS FOR SOME SOFTWARE TOOLS.

STP FILE NAME	DATE	ITEM NUMBER
MO-332B-A_PMSO-E17-l1p2-R10p1x10p3Z2p35-N15p2C0p35T0p65	JAN 2023	11-1046
MO-332B-B_PMSO-E17-l1p2-R10p1x10p3Z2p51-N15p2C0p35T0p65	JAN 2023	11-1046

TASK GROUP CONTRIBUTORS

INFINEON TECHNOLOGIES AG


CHANGE RECORD

IF THE CHANGE INVOLVES ANY WORDS ADDED OR DELETED (EXCLUDING DELETION OF ACCIDENTALLY REPEATED WORDS), THE CHANGE IS TO BE INCLUDED BELOW. PUNCTUATION CHANGES MAY OR MAY NOT BE INCLUDED.

INITIAL ISSUE: A	DATE: AUGUST 2018	ITEM NUMBER: 11-958
------------------	-------------------	---------------------

CHANGE RECORD HISTORY:

ISSUE: B	DATE: JANUARY 2024	ITEM NUMBER: 11-1046
----------	--------------------	----------------------

LOCATION:	CHANGED FROM:	CHANGED TO:
SHEET 1		ADDED VARIATION B
SHEET 3		ADDED GAUGE PLANE 0.66
		ADDED VARIATION B
SHEETS 3 & 5	 16X 0.085±0.075	REMOVED NOTE 10 AND ASSOCIATED DIMENSIONS
SHEET 5	NOTE 11 NOTE 12	TO NOTE 10 TO NOTE 11

JEDEC SOLID STATE PRODUCT OUTLINE Copyright © 2024 JEDEC	TITLE PLASTIC MULTI SMALL OUTLINE, 17 TERMINAL, 1.20 MM PITCH PACKAGE	NUMBER MO-332	ISSUE B	DATE JAN 2024	SHEET iii
--	--	------------------	------------	------------------	--------------